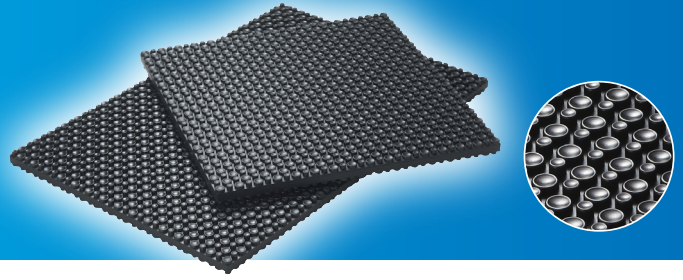


High Performance Rubber Isolator

Dimple Pad

High performance anti-vibration pad.
Specialized in



Benefit

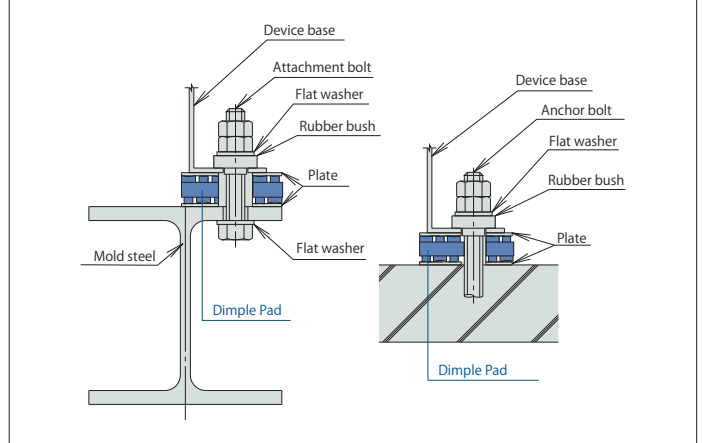
- 99% vibration cut. It is well qualified as an anti-vibration pad.
- It has a vibration absorption. This pad receives a wide range of vibrations at surface, not just points.
- Good weather resistance feature by using chloroprene rubber.
- Thin design and high performance.
- Noise reduction and vibration control for outdoor equipment.

Applications

Reducing vibration and solid noise from construction facility equipment with followings:
building type multi outdoor unit/floor type inside unit/fan coiled unit/air handling unit/chiller/turbo refrigerating machine/power generator

Used for reducing vibration and solid sound reduction from frequency bandwidth more than 15Hz (900cpm).

Typical applications



Structure

Type	Product dimension (W × L × t)	Rubber Hardness Degrees
DP-3340	300 × 300 × 18 t	40
DP-3360		60
DP-3440	300 × 450 × 18 t	40
DP-3460		60

Material : CR (Chloroprene)

DP-0003

DP-0005

DP-0006

Type	Product dimension	Rubber Hardness Degrees
DP-0003	50 × 50 × 18 t × φ 14	40
DP-0005	70 × 100 × 18 t × φ 22	
DP-0006	70 × 100 × 18 t × φ 22	

Material : CR (Chloroprene)

■ Rubber bush (optional)

Type	φD1	φD2	φd	t 1	t 2
TB-10 (For M10)	26	12	9.5	8	5
TB-12 (For M12)	28	14	12.5	8	5
B-16 (For M16)	36	20	17	8	5
B-20 (For M20)	40	25	21	8	5

Material : Synthetic rubber

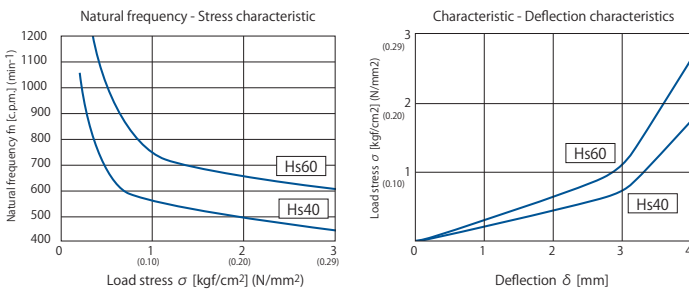
■ Plate (optional)

Material : S U S 3 0 4 (2 . 0 t)

DPP-02

DPP-03

Data comparison to help you choose



Calculation method of required area

$$\frac{\text{Machinery weight (kg)}}{\text{Load bearing of chosen dimple pad (kgf/cm}^2\text{)}} = \text{Required area for dimple pad (cm}^2\text{)}$$

Withstand loads

Type	Product dimension (W × L × t)	Rubber Hardness Degrees	Load bearing per 1cm ² N / c m ² (k g f / c m ²)	Maximum allowable load of specified lengths N (kgf)	Mass kg
DP-3340	300 × 300 × 18 t	40	3.92 (0.4) ~ 12.75 (1.3)	11473.8 (1170)	1.6
DP-3360		60	5.88 (0.6) ~ 19.61 (2.0)	17651.9 (1800)	
DP-3440	300 × 450 × 18 t	40	3.92 (0.4) ~ 12.75 (1.3)	17210.6 (1755)	2.3
DP-3460		60	5.88 (0.6) ~ 19.61 (2.0)	26477.9 (2700)	
DP-0003	50 × 50 × 18 t × φ 14	40	3.92 (0.4) ~ 12.75 (1.3)	318.7 (32.5)	0.04
DP-0005	70 × 100 × 18 t × φ 22			892.4 (91.0)	
DP-0006				892.4 (91.0)	

Rubber bush

Type	Type
TB - 10	B - 16
TB - 12	B - 20

Liner plate

Type	Type
DPP - 02	DPP - 03

This brochure may be revised without prior notice. We apologize in advance for any inconvenience this may cause.

Agent

TOZEN Corporation

8-4, Asahi, Yoshikawa
Saitama 342-0008 Japan

WE72-1710